

**CLEARED
FOR TAKEOFF**



OK Flyers, LC

Inherit the Adventure!

For Sale: Once-in-a-lifetime packaged deal!

Flying Club/Airplane/Hangar/Supporting equipment/Tax advantages/1-month Personal Consulting.

This package is for the aviation enthusiast who wants to get up and running quickly. I have spent the last nine years accumulating the *right* airplane, hangar space, and tools/equipment for supporting the club and care of the airplane. This deal will save thousands of hours of searching, collecting, buying tools, equipment, finding parts lists, manuals, etc. because all of those are included.

This purchase also comes with my personal consulting time to help get you up and running in minimal time. This includes spreadsheet templates for club accounting and tracking pilot hours for members, etc.

See below for specifics on the airplane:



**CLEARED
FOR TAKEOFF**



OK Flyers, LC



**CLEARED
FOR TAKEOFF**



OK Flyers, LC

1978 CESSNA 172N - N737EW

of Engines: 1
Engine Make: LYCOMING
Engine Model: O-360-A4M (Airplains STC)
Engine Power: 180 hp
Recorded TBO: 2,000
Standard Fuel: 40.00 gal
75% Cruise: 142 mph | 123 kts
Stall: 55 mph | 47 kts
Range: 506 NM
Service Ceiling: 17,000 ft
Rate of Climb: 800-1000 ft/min
Wingspan: 36.00 ft
Length: 27.17 ft
Height: 8.92 ft
Empty Weight: 1,549.1 lbs
Gross Weight: 2,550 lbs
Complete logbooks for Airframe, Engine & Prop.
Annual inspection completed June, 2021
Certified current for both VFR & IFR flying
S/N 17269370

AVIONICS

Two new MX-385 Nav/comm radios
•One is still under warranty
Two VOR heads; one with Glide Slope
EI Engine Analyzer (EGT & CHT)
Horizon Instruments - Electronic Digital Tach
Appareo Stratus ESG - ADS-B compliant.
Garmin 396 coupled to auto pilot
TruTrak -PMA Vision 3; 2-Axis Autopilot with:
•Bank Angle Select (if no GPS signal)
•Track Select
•GPS Nav (point to point type flight plans)
•Vertical Speed Select
•Altitude Hold
•Altitude Select

AIRFRAME & ENGINE

Airframe TTSN – 5490 hrs.
Engine TTSN -1,003 hrs.
Power Flow Sys. - Tuned exhaust offers:
•Increase in RPM (30-130 more).
•Improved rate of climb (100 - 300 fpm).
•At cruise speeds save 1/2 to 2.2 gal/hr.
•Increased service ceiling by 2,000' to 5,000'
•CHT's reduced by 100 F – 200 F
Rebuilt both magneto's in 2019
New Sky-tec starter - 2020
Standby alternate vacuum source
Alternate static source
Adjustable red/white DC3 panel lighting
Individual instrument red panel lights
Two LED headlamps: Taxi/Landing
Nav. Lights & strobe lights
Both pilot & passenger windows open
Tinted windows & two new dark tint skylights
CO Monitor with digital inside temp. reading
Standard six-pack vacuum/elect. Instruments
Rudder trim
New Vacuum pump – 2021

- Altitude Pre-Select
- Control Wheel Steering
- Emergency Level Button
- AEP (Bank Angle Protection Mode)
- Roll Servo
- Pitch Servo

Davtron M/800 Digital Clock with:

- Universal Time
- Local Time
- Elapsed Time with Countdown Timer
- Elapsed Time Alarm
- Option Audio Alarm
- Liquid Crystal Display

Four place intercom system
Digital Volt/Amp Meter
Dual USB Charger



OK Flyers, LC



Propane engine pre-heater



Co-Pilot side



IFR Certified with auto pilot.

**CLEARED
FOR TAKEOFF**



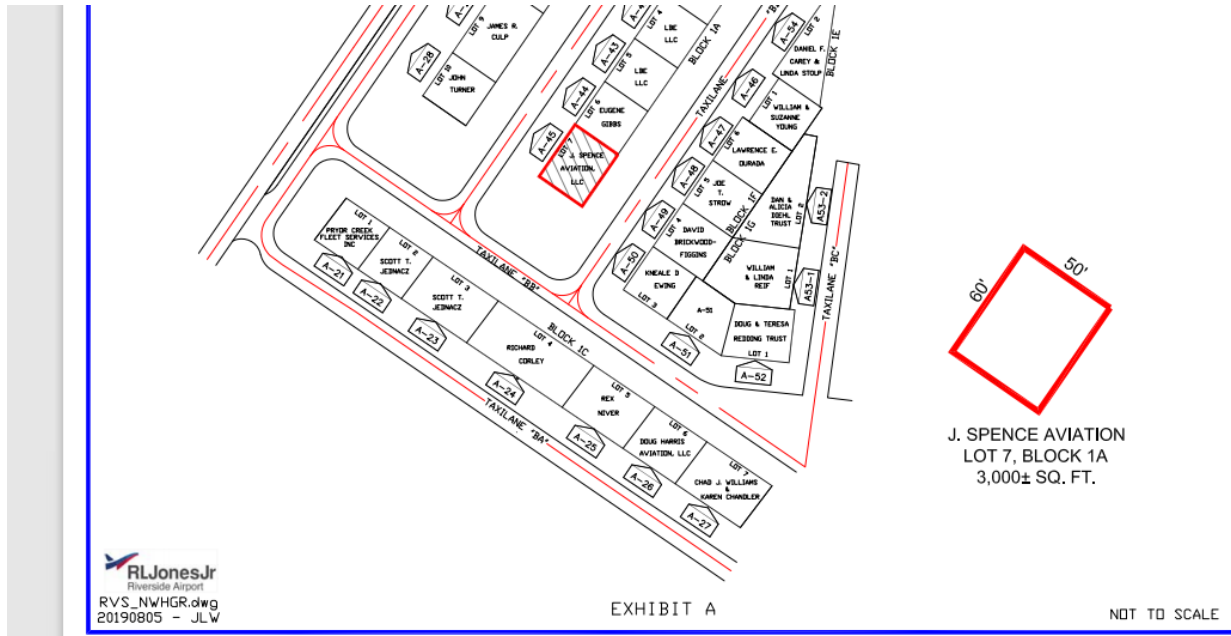
OK Flyers, LC

Hangar Specs: Closed cell insulated 30' x 40' hangar with future expansion of up to 50' x 75'. This comes complete with sink, shelving, fans, work bench, heaters, air compressor, tools, etc.

Hangar doors open on the east side, so sun is not coming in during the evening time. You can see runway & landing approach for 19R & 19L from the hangar doors.

Bathrooms are close and are directly behind the hangar to the west.

Lease agreement is for 50' x 60' shown below:



Bundled Price: \$350,000 USD.

---OR---

You can purchase just the airplane and the C172 specific engine preheater for \$120,000 USD.

For more info. contact

Jeff Spence at 918-361-5734 or email at jeff.spence1@cox.net

