

NEW ARRIVAL POINTS INTO RVS AIRPORT

“TURNPIKE SPLIT”

“CROSSCREEK WAREHOUSE”

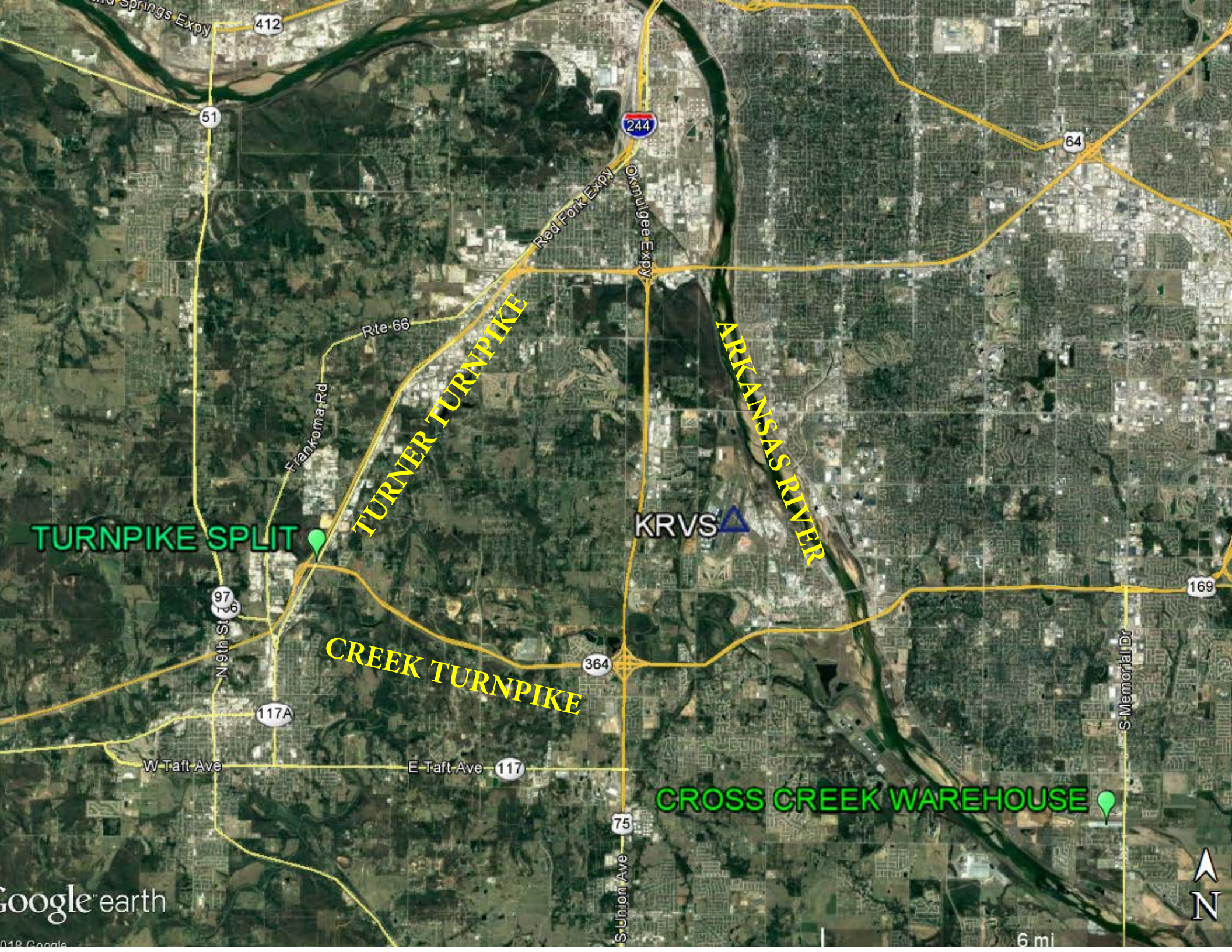
TULSA APPROACH WILL BE INSTRUCTING VFR AIRCRAFT INBOUND TO RVS TO PROCEED OVER THESE GEOGRAPHICAL LOCATIONS FOR A DOWNWIND ENTRY AT THE AIRPORT.

EXAMPLE:

“N123TB PROCEED TO THE TURNPIKE SPLIT THEN ENTER A LEFT DOWNWIND FOR RUNWAY 1L.”

“SPARTAN22 PROCEED OVER THE CROSSCREEK WAREHOUSE, MAINTAIN 3000 UNTIL THE WAREHOUSE, THEN ENTER A LEFT DOWNWIND FOR RUNWAY 19L.”

**IF YOU WOULD LIKE THIS INFORMATION EMAILED TO YOU, CONTACT TODD BIGGS AT TULSA ATCT AT:
todd.a.biggs@faa.gov**



TURNPIKE SPLIT

TURNER TURNPIKE

CREEK TURNPIKE

ARKANSAS RIVER

KRVS

CROSS CREEK WAREHOUSE





TURNER TURNPIKE

CREEK TURNPIKE

TURNPIKE SPLIT

Frankoma Rd

Rte 66

West 91st St S

Ridgeview St

W 96th St S

N Frankoma Rd

S Frankoma Rd

S Grand W Ave

3rd St

100th S St

S 95th St

44

66

Freedom Ave

Brenno Rd

Freedom Rd

W Hilton Rd

364

Westway Rd

Shadywood Dr

Wickham Ln

Shari Ln

Royalwood Way

Smith Cir



East 121st St S

CROSS CREEK WAREHOUSE



ARKANSAS RIVER

East 131st St S

Kimberly Clark Pl

64

S Memorial Dr

East 141st St S

Sandusky Pl

S Yale Ave

